

REINFORCING STEEL (A.S.T.M. A-615 GRADE 60)					
SYM	QTY	SIZE	LOCATION, DIRECTION	LENGTH	WGT
ST1	24	#6	FOOTERS, LATERAL	12'-2	439
ST2	22	#5	APPROACHES, LATERAL	12'-2	280
ST3	26	#5	APPROACHES, LONG.	9'-6	258
L1	26	#5	APPROACH TO FOOTER	2'-0x2'-0	109
TOTAL					1086

MATERIAL SUMMARY *	FOOTER DEPTH: "X" INCHES (24 INCH MINIMUM)				
	24	36	48	60	72
FOOTERS AND APPROACHES ONLY					
CONCRETE (CU. YD.)	26	34	42	50	58
REINFORCING STEEL (LB)	1086				

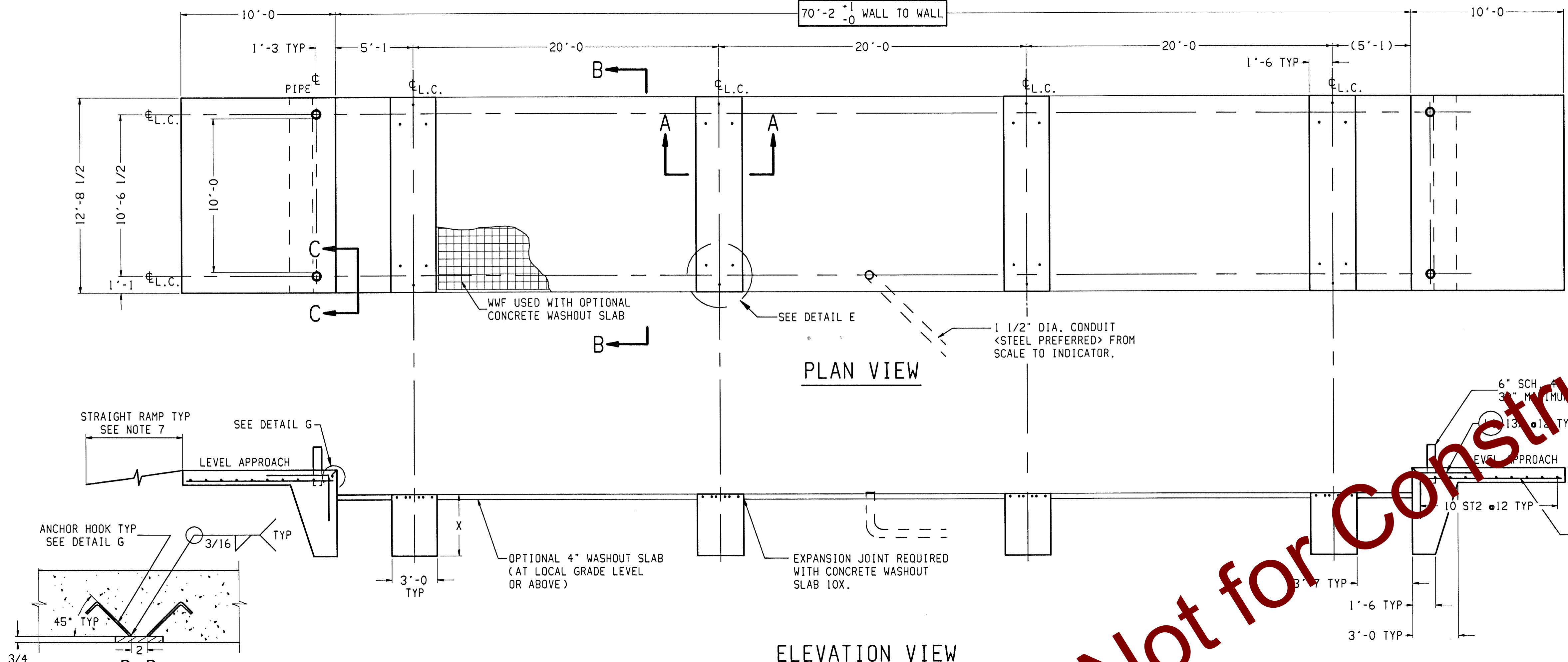
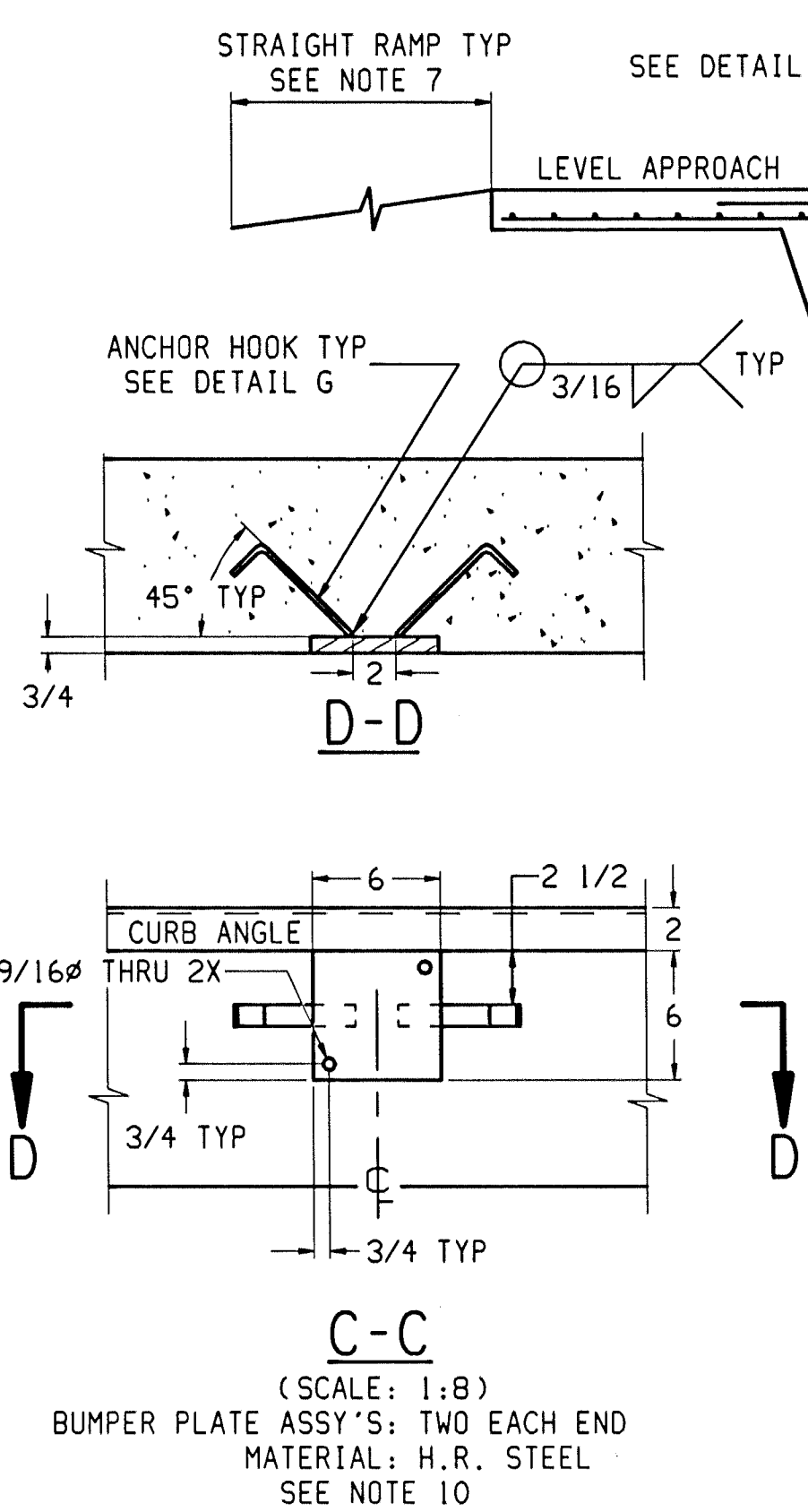
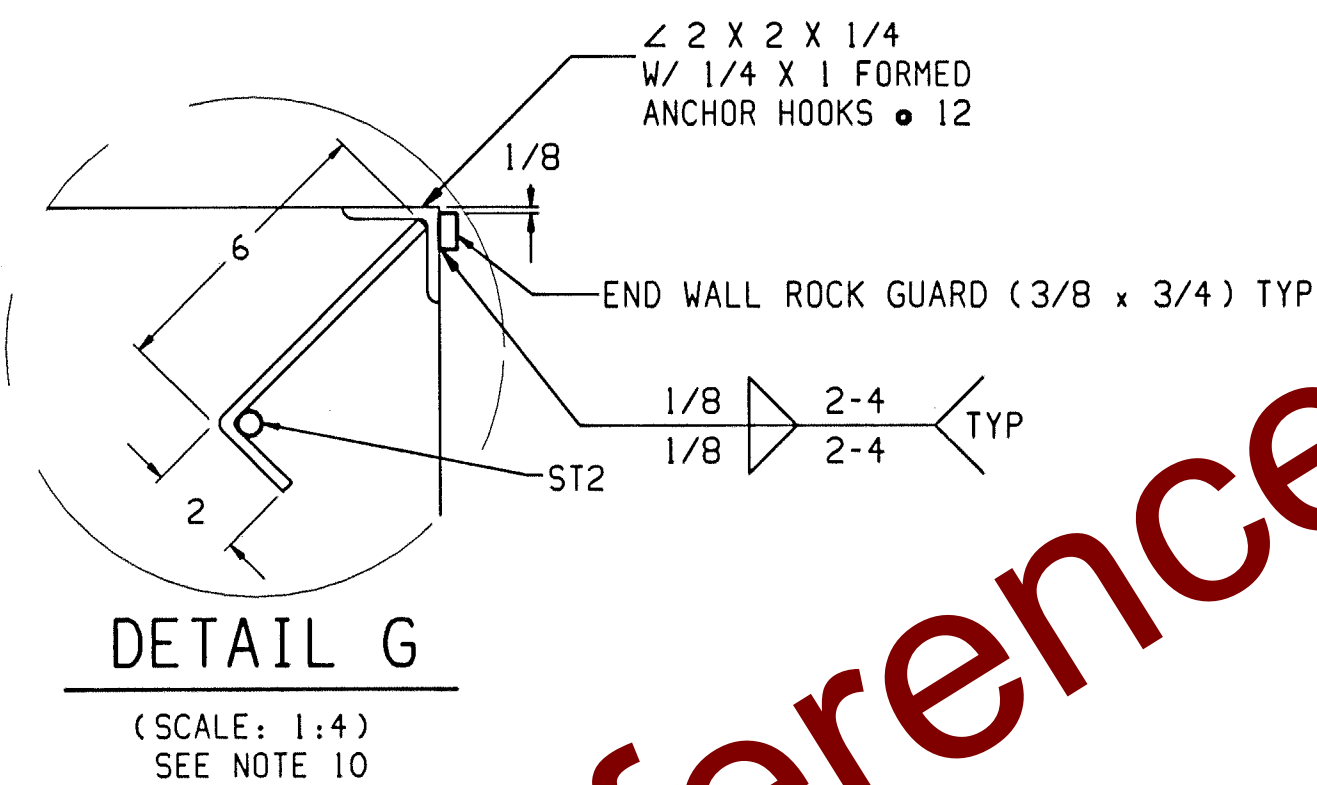
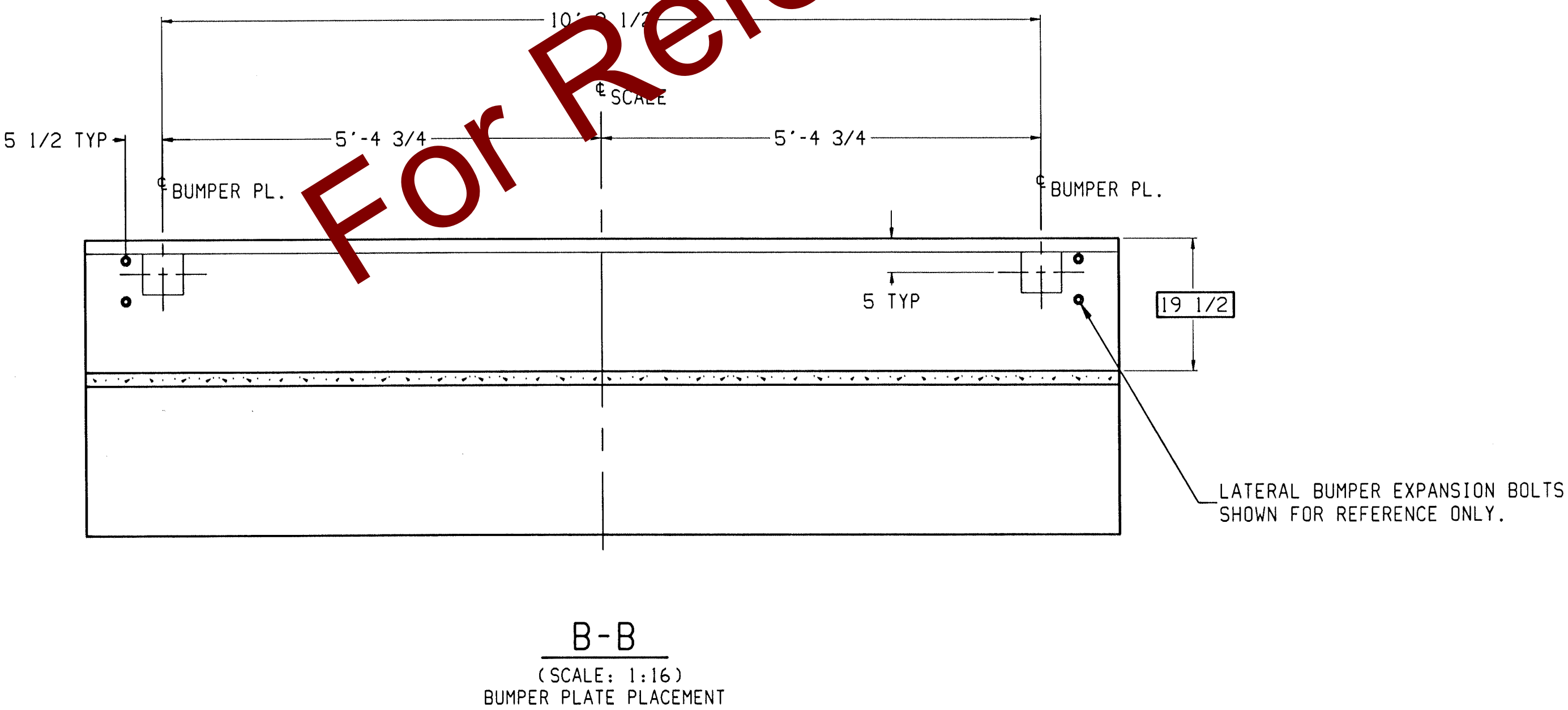
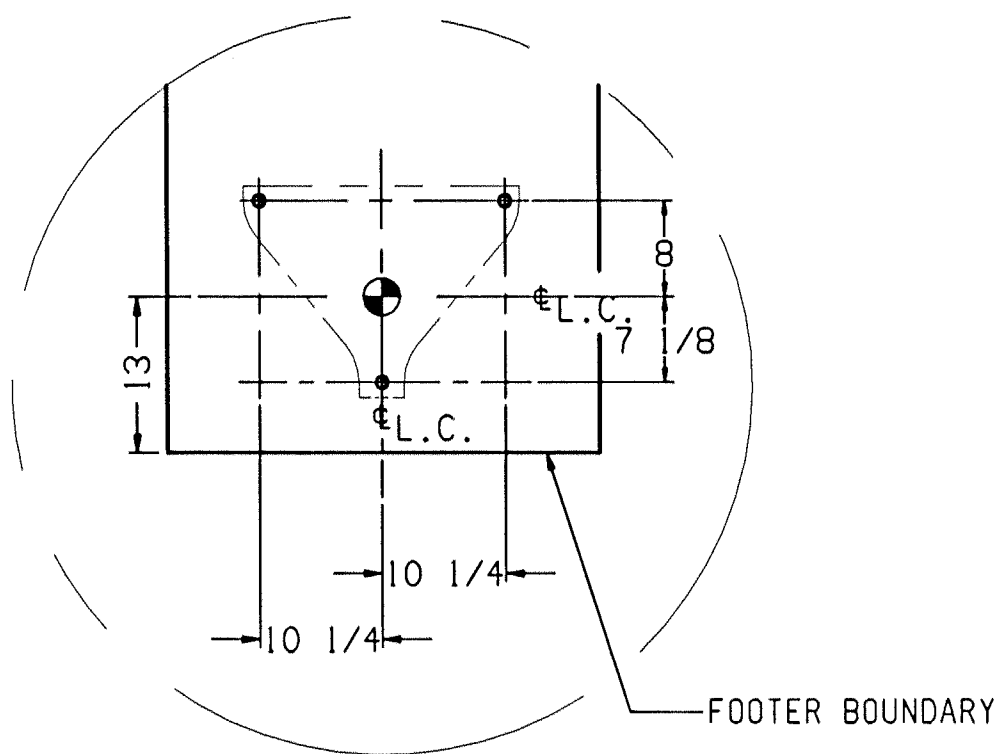
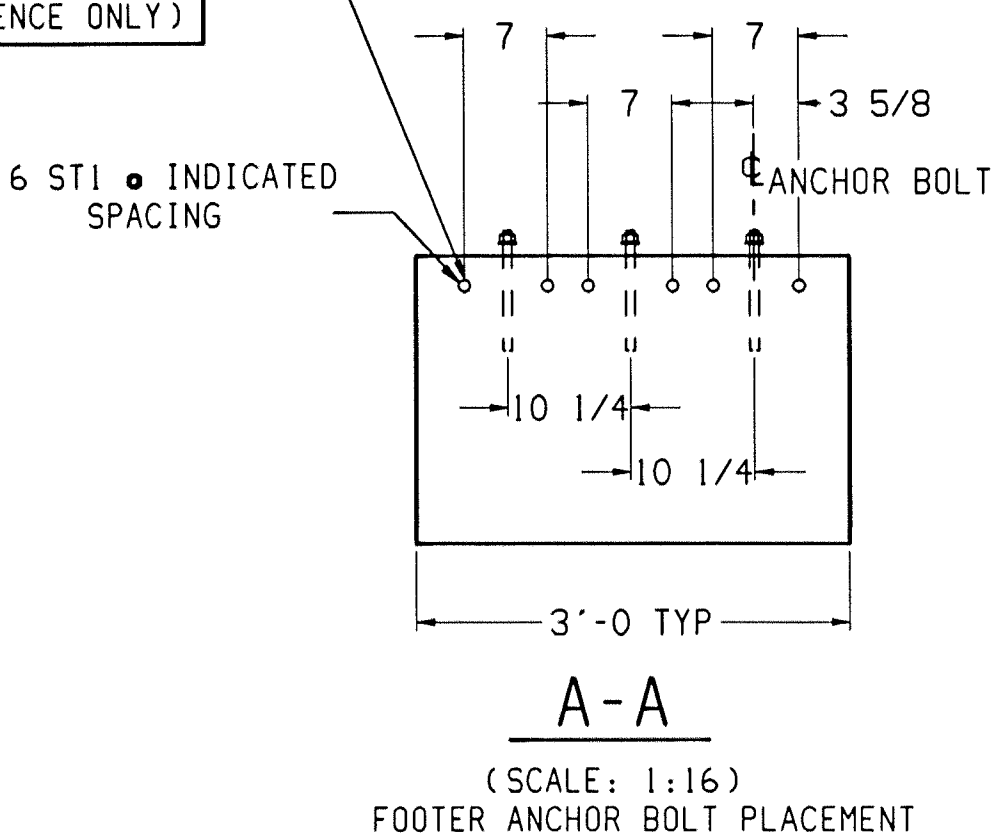
FOR OPTIONAL 4" CONCRETE WASHOUT SLAB ADD:
 WWF 6x6 WL.4xWL.4 - 750 SQ. FT.
 CONCRETE - 10 CU. YD.
 1/2" EXPANSION JOINT - 130 FT.

* REFER TO SCALE GENERAL LAYOUT DRAWING FOR
 DECK CONCRETE AND REINFORCING STEEL SPECIFICATIONS.

NOTES:

- 1) USE MINIMUM 3000 PSI STRENGTH CONCRETE AT 28 DAYS WITH 5-7% AIR ENTRAINMENT.
- 2) USE MINIMUM 60KSI YIELD DEFORMED REINFORCING STEEL.
- 3) FOUNDATION REQUIRES 2500 PSF RATED SOIL.
- 4) TOP OF CONCRETE AT BASEPLATE LOCATIONS TO BE LEVEL AND IN ONE PLANE $\pm 1/8"$.
- 5) DIAGONAL MEASUREMENTS, ENDWALL TO ENDWALL, MUST BE EQUAL WITHIN $1/2"$.
- 6) BASEPLATE AND LATERAL BUMPER ANCHORS SUPPLIED BY METTLER TOLEDO. USE BASEPLATES AND LATERAL BUMBERS AS TEMPLATES TO LOCATE EXPANSION BOLTS DURING SCALE INSTALLATION.
- 7) RAMP LENGTH: -PER LOCAL REGULATIONS
 -1/2" SLOPE PER FOOT TYPICAL
- 8) OPTIONAL: 6" OF GRAVEL MAY BE USED UNDER APPROACHES TO IMPROVE DRAINAGE.
- 9) MINIMUM DEPTH OF COVER FROM THE SURFACE FOR REBAR IS 2". HOWEVER IN PLACES WHERE THE SURFACE IS IN CONTACT WITH THE GROUND, THE REBAR COVER SHOULD BE 3".
- 10) CONTRACTOR SUPPLIES:
 -EXCAVATION
 -CONCRETE AND FORMS
 -REINFORCING STEEL
 -1 1/2" DIA CONDUIT
 -CURB ANGLE ASSEMBLIES (DETAIL G)
 -BUMPER PLATE ASSEMBLIES (VIEWS C-C & D-D)
 -END WALL ROCK GUARD (DETAIL G)
 -6" SCH. 40 PIPE.

SPACE REBAR TO AVOID EXPANSION BOLTS; TYPICAL ALL BASEPLATE AND LATERAL BUMPER LOCATIONS. (BOLTS SHOWN FOR REFERENCE ONLY)



REV	CHANGE	BY	DATE	SCALE 1/50	METTLER TOLEDO
				DATE 10/7/98	
				DRN JEB APPD JB	TITLE 7531KD FOUNDATION VARIABLE FOOTER 70'x10'
				UNLESS OTHERWISE SPECIFIED, ALL DIMENSIONS ARE IN INCHES, AND DIMENSIONAL TOLERANCES ARE:	THIS PRINT IS FURNISHED WITH THE UNDERSTANDING THAT THE ESSENCE THEREOF WILL NOT BE REPRODUCED IN WHOLE OR IN PART WITHOUT WRITTEN AUTHORIZATION OF METTLER-TOLEDO, INC. ALL DESIGNS ARE THE PROPERTY OF METTLER-TOLEDO, INC. AND WILL BE PROTECTED BY PATENTS.
				FRACTIONAL DECIMAL ANGULAR 1/32 .XX ±.02 ±.5° .XXX ±.005	
					TC203641